

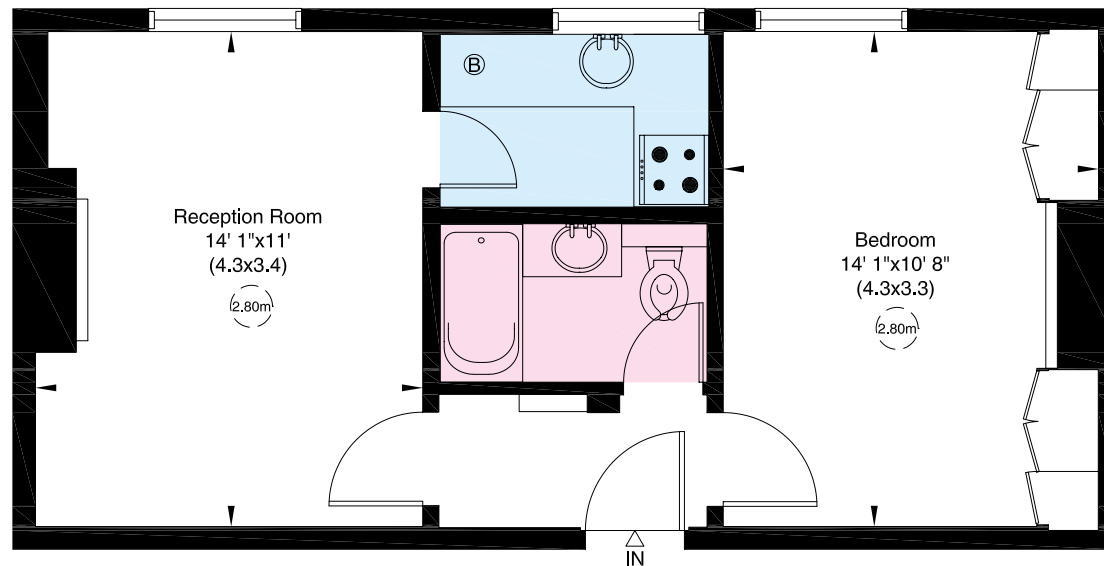


ELM PARK MANSIONS
LONDON SW10

A newly refurbished one bedroom flat presented in good condition and quietly situated at the rear of this popular portered block with views of the communal gardens behind from all the rooms.



Gross internal area (approx.)
39 sq m (422 sq ft)



Raised Ground Floor

TENURE Leasehold
plus Share of Freehold
SERVICE CHARGE
£1,767.04 per annum
ASKING PRICE
£675,000



MISREPRESENTATION ACT 1967. THIS BROCHURE AND THE DESCRIPTIONS AND MEASUREMENTS HEREIN DO NOT CONSTITUTE REPRESENTATION AND WHILST EVERY EFFORT HAS BEEN MADE TO ENSURE ACCURACY, THIS CANNOT BE GUARANTEED. 342588